



LINCE

www.lince-crane.com



REF: LC1100

LINCE CAMERA CART 100

LINCE CAMERA CART 100



PRODUCT DESCRIPTION

Very stable cart of easy assemble and use, designed for the audiovisual industry, it adapts with its accessories to the needs of the Camera Operators, DIT or Steadicam. It has the Lince Brake System (**SFL**), which gives it excellent fixation when it stops. Made of high resistance aluminium, pneumatic wheels and trays, covered with non-slip rubber that is easy to clean.

- Available in two sizes

MEASUREMENTS

MOUNTED: Height 1080 mm / Width 650 mm / Length 1000 mm / Height between trays - two positions - 590 / 520 mm).

FOLDED: Height 490 mm / Width 650 mm / Length 1000 mm.

COLLAPSIBLE!



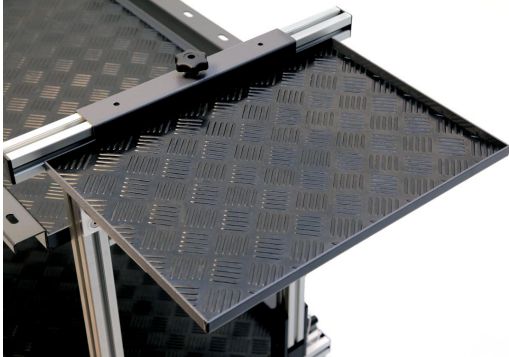
THE WHEELS

10" pneumatic wheels, manufactured in the EU. Two of them have the SFL system (Lince Brake System) integrated, which provides the Lince Cart with excellent fixation when standing that does not worsen with the deterioration of the pneumatic wheel.



ACCESORIES

EXTENSION PLATE



REF: LC0001

ADJUSTABLE HEIGHT TRAY



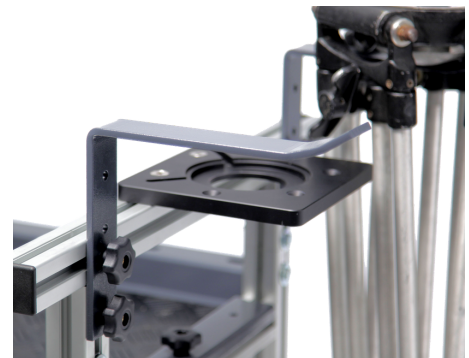
REF: LC0002 y LC0003

CABLE HOLDER



REF: LC0008

TRIPOD HOLDER



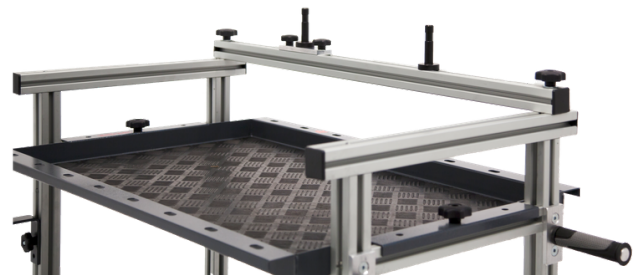
REF: LC0009

PLATE CART 3/8" - 1/4"



REF: LC0012

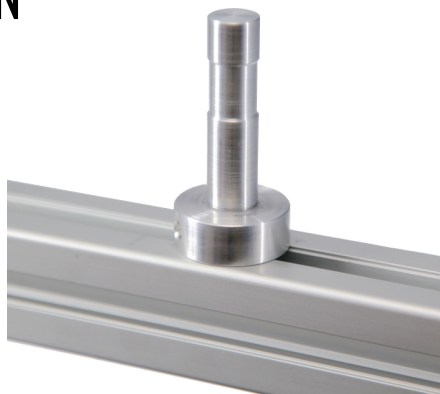
MONITOR BAR (pins not included)



REF: LC0007 y LC0011

ACCESORIES

PIN



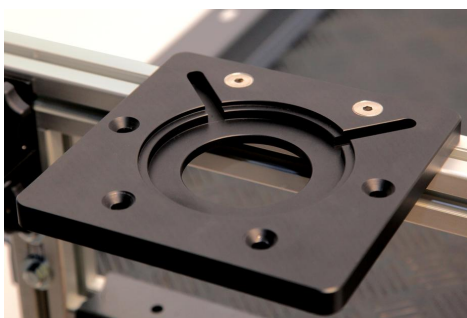
REF: A00001

PIN XL EXTRA FIXATION



REF: A00007

PLACA BASE MITCHELL



REF: LC0004

ADAPTER MITCHELL TO
BOWL 150 MM



REF: A00004

ADAPTER MITCHELL TO
BOWL 100 MM



REF: A00003

LINCE CAMERA CART 100



SALES & SHIPPING WORLDWIDE
TAXES AND SHIPPING COSTS NOT INCLUDED

PRICE: 875 €



ON SET



info@lince-crane.com



www.lince-crane.com

THE POWER OF MOTION